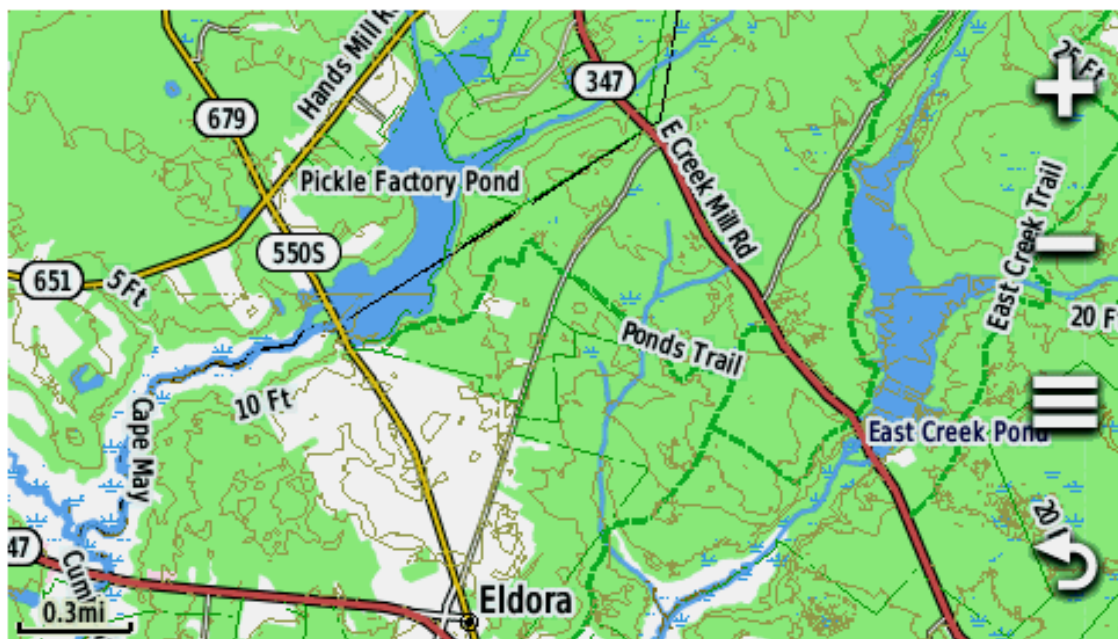


Boyd's Map of New Jersey 2012



This highly detailed topo map covers the entire state of New Jersey with portions of adjacent states, and is compatible with all Garmin mapping GPS receivers.



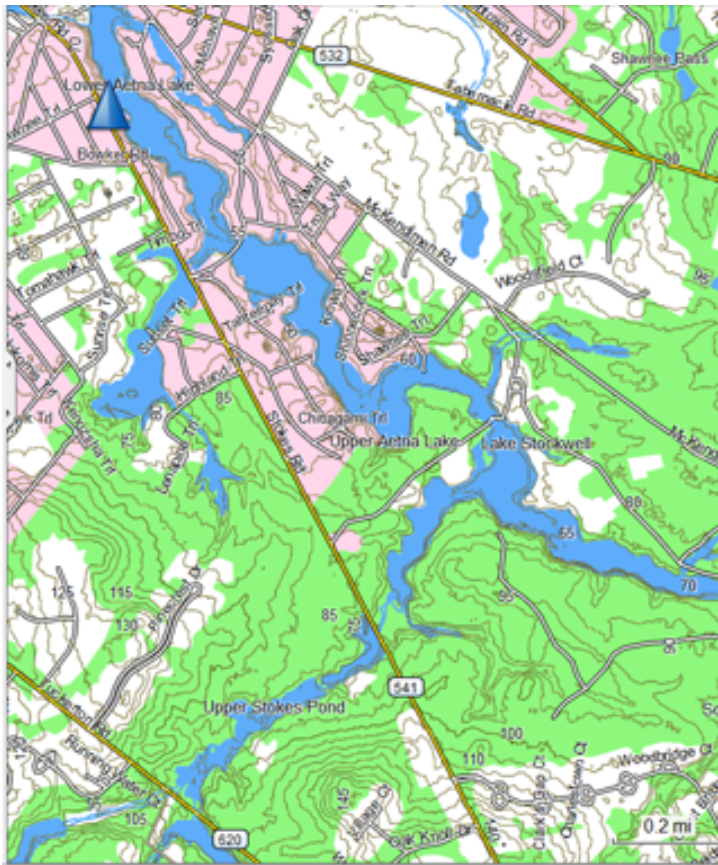
Montana 600



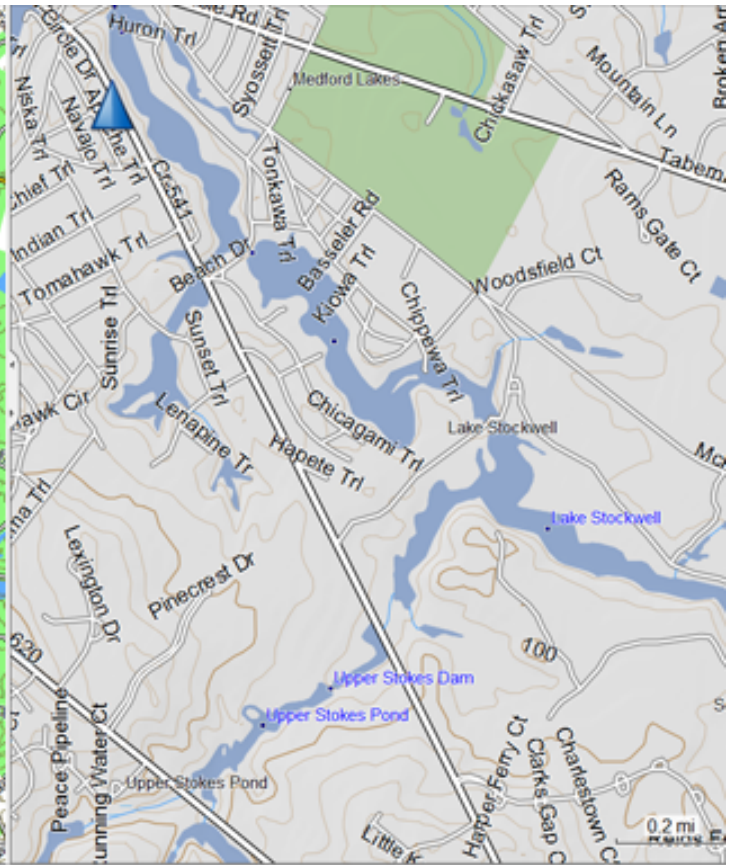
GPSMap 60csx



Nuvi 205



Boyd's Map of New Jersey 2012



Garmin US 24k Topo Northeast

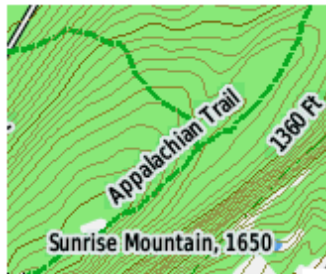
New Features of the 2012 Version

| Name / |
|----------------------|
| 0074 Stroudsburg, PA |
| 0075 Portland, PA |
| 0076 Blainstown, NJ |
| 0077 Tranquility, NJ |
| 0078 Stanhope, NJ |
| 0079 Dover, NJ |

Map tiles based on
USGS 24k quads



NJDOT numbered county routes



Includes many hiking trails



Contours generated from high
resolution LIDAR DEM

Compatible with older devices – the previous version did not display text correctly on units such as the eTrex Legend/Vista and GPSMap 60 series. Text display has been corrected in the 2012 version and performance has also been increased for faster zooming and panning.

NJDEP 2007 Land Use / Land Cover Data – provides more accurate representation of forest cover, water features, suburban development and industrial sites.

Map tiles based on USGS 24k quads – the map has been “sliced” into small tiles corresponding with the names and boundaries of USGS 24k topo maps. Individual tiles range in size from about 200KB to 1.5MB, making the map more compatible with older GPS devices that have limited internal memory. The previous version consisted of 35 large tiles while the 2012 version has 279 small tiles. Smaller map tiles also result in better performance on the GPS receiver.

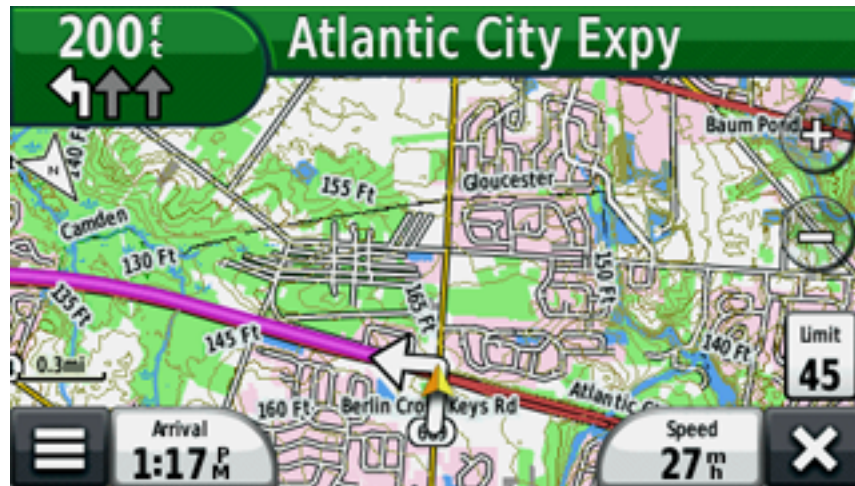
NJDOT classified county routes – route numbers are now displayed with an icon on the road. These numbers, not available on other maps, have been added by hand-editing the map data.

More accurate roads – many errors have been corrected and many more unpaved roads have been added using NJ 2007 aerial imagery.

Hiking trails – trails have been added where data was available. New data includes the Appalachian trail, Batona Trail, Belleplain State Forest, Byrne State Forest and others.

High resolution LIDAR DEM data – where available, 1/9 arc-second NED LIDAR DEM data has been used to generate contours. This data has a source resolution of about 10 feet per pixel, and in conjunction with small contour intervals, reveals much detail than other maps.

Works with City Navigator® - if both maps are enabled, the full search, routing and guidance information from City Navigator® will be available while Boyd's Map is displayed on the screen.



Displays guidance info on map when used with
Garmin City Navigator® on compatible devices

* City Navigator® is a trademark of Garmin Ltd.

Compatibility

Windows XP, Windows Vista, Windows 7

- Garmin Basecamp 2.08 or newer
- Garmin Mapsource 6.14.1 or newer
- Garmin nRoute and older versions of Mapsource using MapReverseConverter (<http://www.javawa.nl/mapreverseconverter.html>)

MacOS X 10.4 or newer

Garmin Basecamp 2.1.2 or newer

Installation

Windows

First, install Garmin Basecamp unless Mapsource is already installed on your computer. Basecamp is available at http://www8.garmin.com/support/download_details.jsp?id=4435

After downloading, right-click the .zip file and choose "Extract All...". Double-click the file named *Windows Installer.exe* and follow the instructions. The maps will now be available for viewing in Basecamp or Mapsource, where they may also be sent to your GPS device.

To remove the map from your computer, use the *Programs and Features* control panel (Windows 7 and Vista) or *Add/Remove Programs* (Windows XP). Select *Boyd's Map of NJ 2012* from the list of programs and click the Uninstall button.

Macintosh

First, install Garmin Basecamp if it is not already on your computer. Basecamp is available here (MacOSX 10.5.8 or newer req'd): http://www8.garmin.com/support/download_details.jsp?id=4449

For older versions of MacOSX, use this version of Basecamp:
http://www8.garmin.com/support/download_details.jsp?id=4939

After downloading, double-click the .zip file to extract the compressed files. Double-click the file named *Boyd's Map of NJ 2012.gmapi*. Follow the prompts for Garmin MapManager to install the map. After installation the map can be viewed with Basecamp and sent to your GPS device with MapInstall.

To remove the map from your computer, run the Garmin MapManager program (found in your Applications folder). Select *Boyd's Map of NJ 2012* and choose File > Delete Map.

Partial List of Data Sources

- Appalachian Trail Conservancy GIS Data
- Atlantic County NJ Preserved Open Space 2008
- Burlington County NJ Open Space 2010
- Guy Thompson's Pine Barrens Points of Interest
- NJDEP 2007 Land Use/Land Cover Data
- NJDEP 2007/2008 Digital Orthophotography
- NJDEP State Forest Trail Maps
- NJDEP Open Space
- NJDEP Placenames
- NPS Park Boundaries
- PA DNR Open Space
- NJDOT County Map Series
- USGS National Elevation Dataset 1/3 arc-second DEM
- USGS National Elevation Dataset 1/9 arc-second LIDAR DEM
- USGS National Hydrology Database
- USGS 24k DRG Maps
- USGS National Land Cover Dataset
- US Census Bureau TIGER/Line® Shapefiles
- US Census Bureau GNIS Place Names

Boyd's Map of New Jersey 2012 License Agreement

Please read this license carefully. By installing this map on your computer and/or GPS device, you are agreeing to all of its terms. This map is copyright © Boyd Ostroff, 2011.

*You are permitted to install this map on any computers or GPS devices that you own for personal, non-commercial use. You may also redistribute this map for non-commercial purposes provided that all files contained in the distribution folder, including this agreement, are included. You may not include this map or any part of it as part of a commercial product for sale. You may not create derivative works from the data in this map. **Any use of this map for purposes other than those described above requires the written consent of the author.***

This software is provided 'as-is', without any express or implied warranty. In no event will the author be held liable for any damages arising from the use of this software.

No claims are made as to the accuracy of the data contained in this map and the user assumes all risks associated with its use. This map is intended for reference, educational and recreational purposes only. The author will not be held responsible for any inaccuracies and no responsibility is assumed for damages or other liabilities due to the accuracy, availability, use or misuse of the data presented.

*Boyd Ostroff
ostroff@stephencreek.com*

Garmin®, MapSource®, BaseCamp® and City Navigator® are registered trademarks of Garmin, Ltd. or its subsidiaries.